



LAKESIDE FLOOD SOLUTIONS

LAKESIDE STAINLESS STEEL FLOOD GATE



PRODUCT DATA SHEET

As Selected by Leeds Royal Armouries and BT





LAKESIDE
FLOOD SOLUTIONS

LFS Stainless Steel Swing Flood Gate

Robust, efficient and effective.
Easy to operate for rapid deployment.

Specification:

- Material: Stainless Steel 304
- Plate Thickness: 3mm
- Fixing: 90 or 180 degrees opening
- Seals: EPDM Waterproof Seals
- Double or Single Leaf
- Finish Options:
 - a) Standard S.S. hairline finish
 - b) Powder coating to any standard RAL colour
 - c) Wood cladding

PRODUCT DATA SHEET

Key features:

- Robust Stainless Steel 304 or Stainless Steel 316 for marine environments
- Manual measure; easy & quick to deploy by one person
- Zero threshold option available
- Range of bespoke locking mechanisms
- Easy to maintain
- Suitable for a wide range of premises and applications including residential developments, business units, riversides, and utility sites
- Tested with zero leakage in real-life flood events



RESIDENTIAL



COMMERCIAL



INDUSTRIAL



UTILITY



01792 561117

sales@lakesidefloodsolutions.co.uk

Bruce Road, Fforestfach Industrial Estate, Swansea SA5 4HS



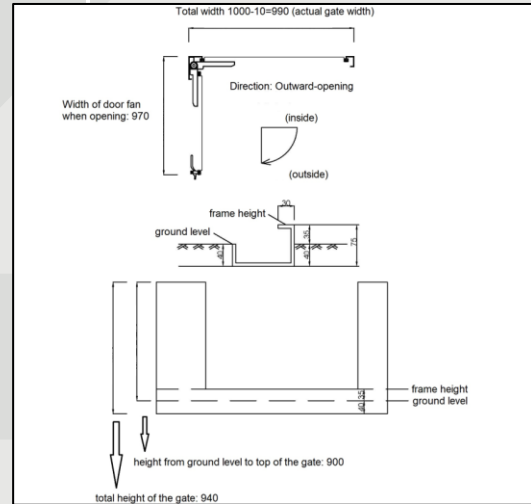
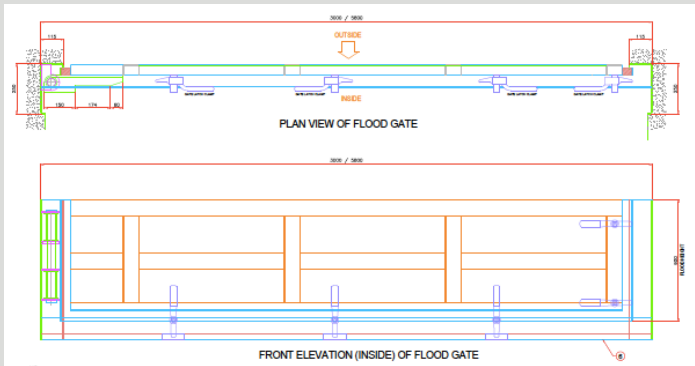
www.lakesidefloodsolutions.co.uk



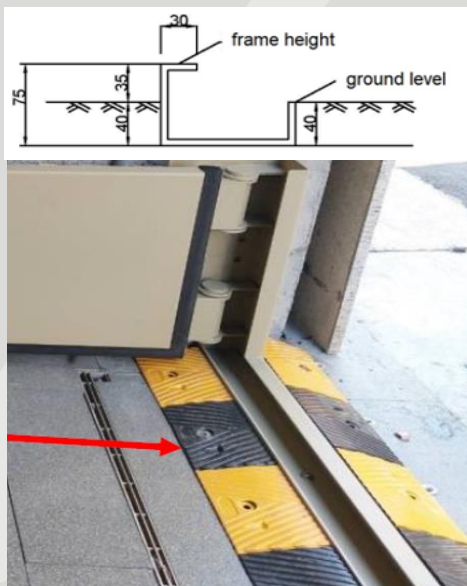
LAKESIDE
FLOOD SOLUTIONS

PRODUCT DATA SHEET

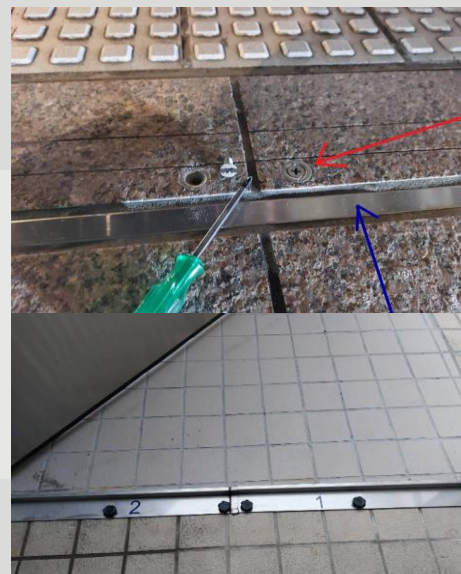
GA Drawings available upon request



Gate Threshold Options



Option A: Threshold with optional ramp



Option B: Zero threshold with detachable frame for gate deployment



01792 561117
sales@lakesidefloodsolutions.co.uk
Bruce Road, Fforestfach Industrial Estate, Swansea SA5 4HS



www.lakesidefloodsolutions.co.uk